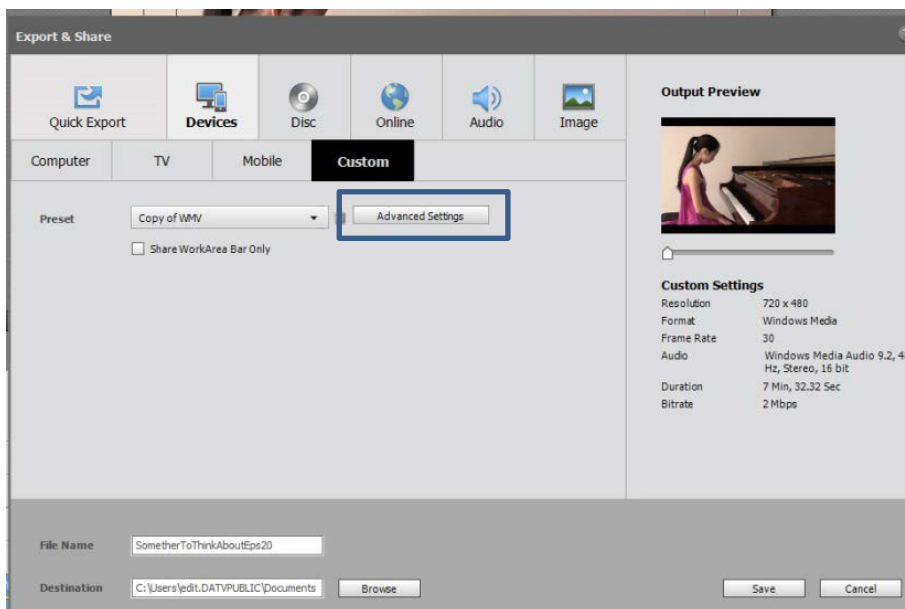
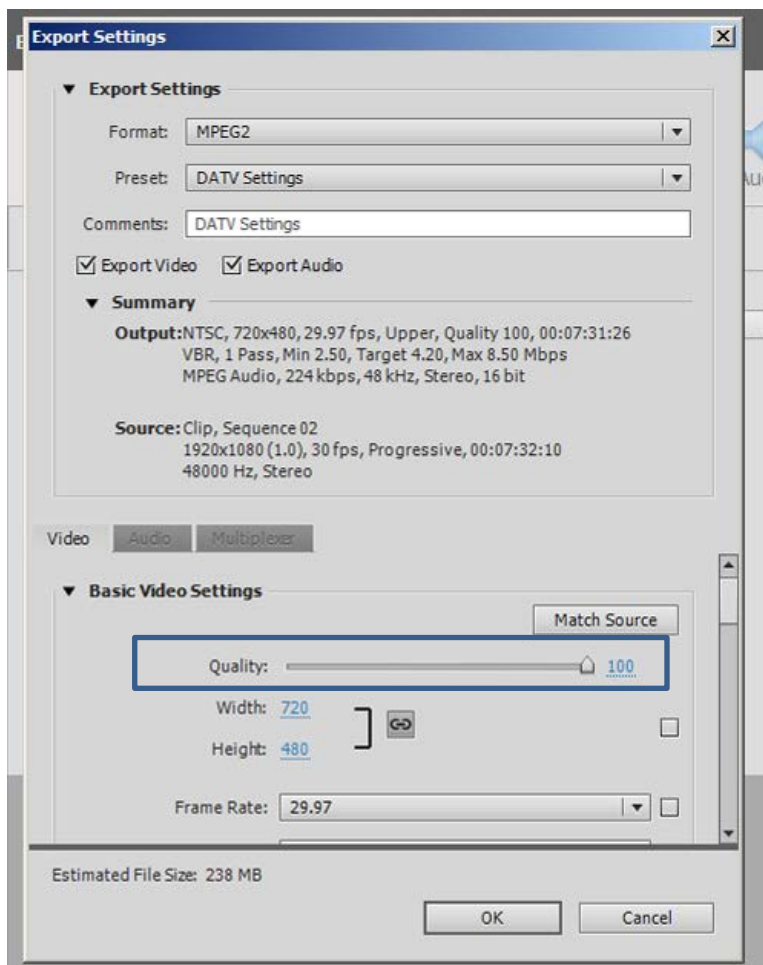


Creating export settings for DATV and/or DSTV programs

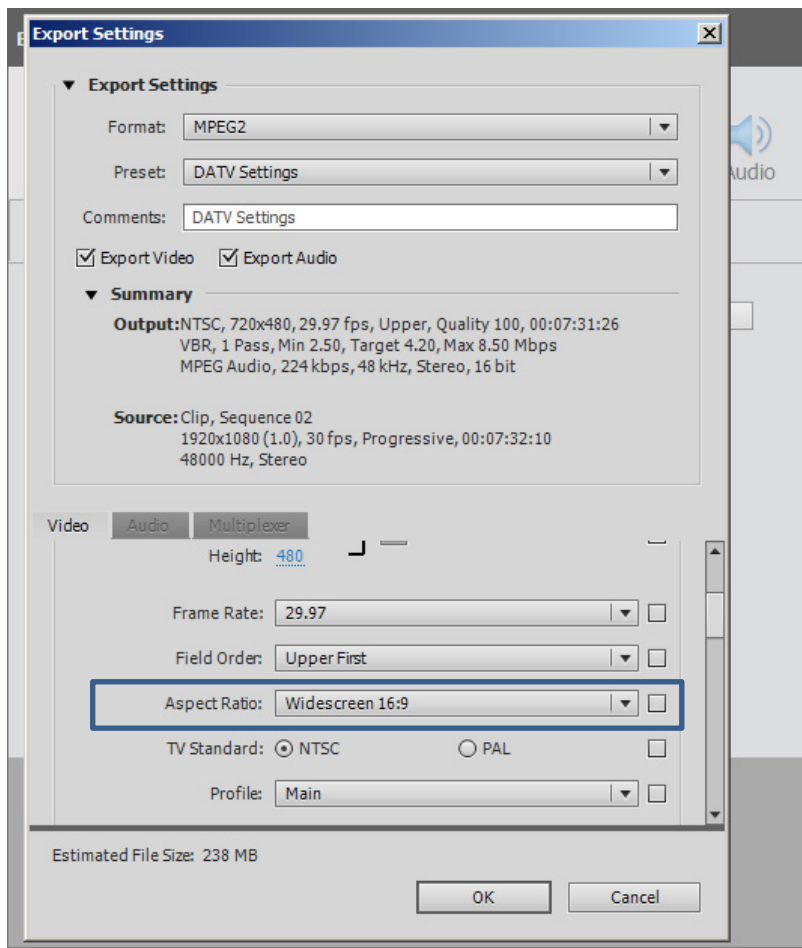
1. Go to **Export & Share**
2. Select **Devices** and then **Custom** and then **Advanced Settings**



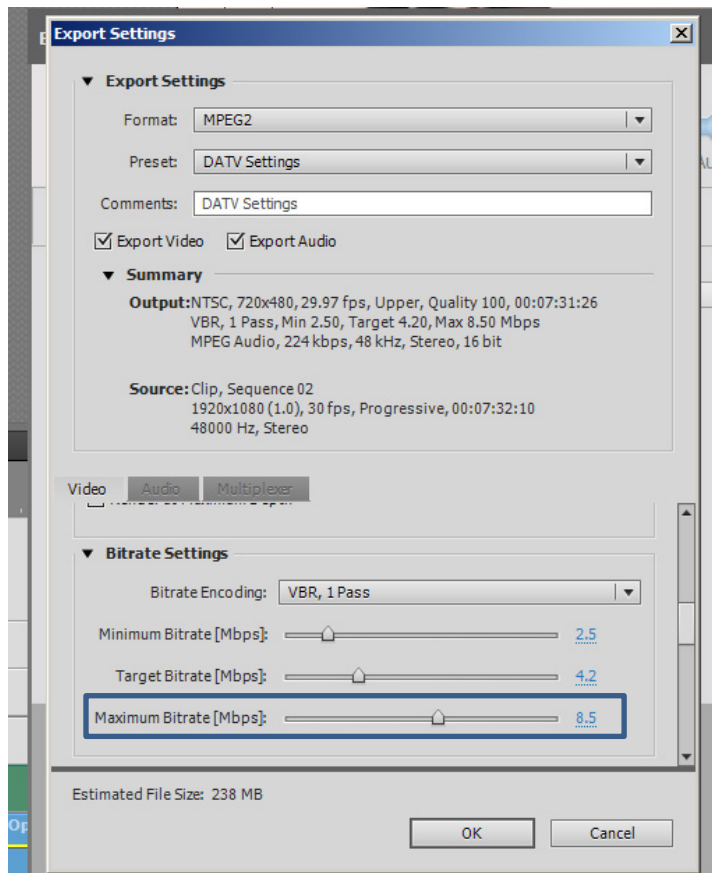
3. Under **Export Settings** is **Format:**
4. Select **MPEG2**
5. Below that and under the **Video** tab drag **Quality to 100**



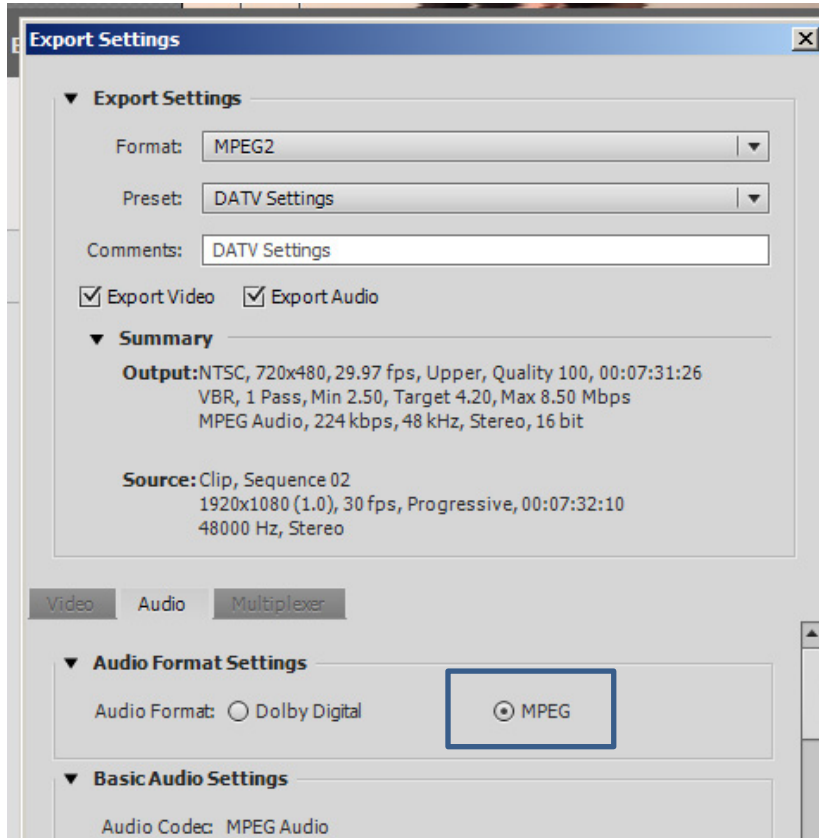
6. Change **Aspect Ratio**: to **Widescreen 16:9**



7. Change **Maximum Bitrate [Mbps]**: to **8.5**



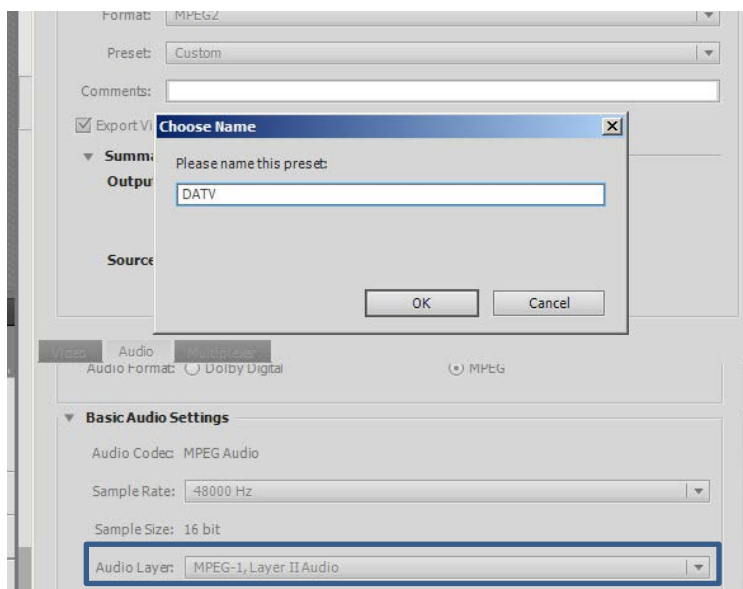
8. Select **Audio** tab



9. **Audio Format Settings:** MPEG

10. Under **Basic Audio Settings** check that **Audio Layer:** is set to MPEG-1, Layer II Audio

11. Select OK and then give this new preset a name like DATV Settings



Using export settings for DATV and/or DSTV programs

1. Select **Export and Share**
2. Select **Devices, Custom**, and then your **DATV Settings**
3. Decide the destination where you want to save it
4. Then give it a **File Name** with no spaces, example, **PianoConcert**
5. Click **Save**

